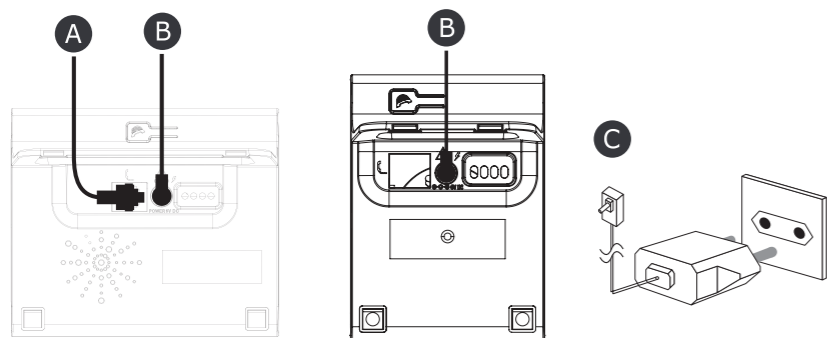


FIRST INSTALLATION

1 Connecting the Base

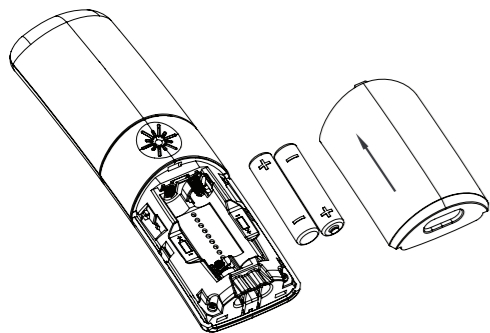
1. Plug one end of the telephone line cord into the telephone jack on base bottom. (Fig. A)
2. Plug the small end of power adapter into a power jack on base bottom. (Fig. B)
3. Plug the large end of power adapter into a wall power outlet. (Fig. C)
4. Plug the other end of the telephone line cord in to the telephone jack or micro-filter.
5. Always use the cables provided in the box.
6. For Duo version, plug the power adaptor of the charger into a wall power outlet.



2 Installing the handsets and Charging the Batteries

1. Slide down to open the battery compartment cover.
2. Place the 2 supplied rechargeable batteries as indicated. Pay extra attention to direction of polarity.
3. Slide the battery compartment cover back.
4. Put the handset on the base or on the charger and charge for **15 hours** before using the handset for the first time. The handset will emit a beep when it is properly placed on the base or charger.

Always use the rechargeable batteries provided in the box.



Notes:

If you need to remove the batteries, slide open the battery compartment cover and using the finger hole, grip the batteries and gently pull them out.

3 First settings before use

After first time power up (base unit is connected to AC mains), welcome mode message will appear on the screen (Fig.1).

1. Select the country where you are using the phone :



2. You can select a language different from the country in HANDSET SETTING menu :

OK MENU / ▲ or ▼ / HS SETTING / OK MENU / ▲ or ▼ / LANGUAGE / ▲ or ▼ / select your language among the below proposals and validate with OK MENU

EN	DE	FR	IT	ES	EL	
LANGUAGE	SPRACHE	LANGUE	LINGUA	IDIOMA	ΓΛΩΣΣΑ	
PT	RU	NL	PL	RO	SRB	HU
IDIOMA	ЯЗЫК	TAAL	JĘZYK	LIMBA	JEZIK	NYELV

In case you selected a wrong language please find below the translation of HS setting to reselect the language

EN	DE	FR	IT	ES	EL	
HS SETTINGS	MT-EINSTEL	REGL. COMB	IMPOSTA PORT	CONF TELEF.	ΠΥΘΜΕΙΣ ΑΚ	
PT	RU	NL	PL	RO	SRB	HU
CONFIG. TERM	ОПЦИИ ТРУБКИ	HANDSET INST	USTAW WŁASNE	PROGR PERS	PERSONALIZ.	K.B. BEALLIT

Troubleshooting

If you have difficulty with your phone, please try the suggestions listed below. As a general rule, if a problem occurs, remove the batteries from all the handsets in your installation for about 1 minute, then disconnect and reconnect the power supply to the base and reinstall the handset batteries.

Problem	Cause	Solutions
No dialing tone when pressing key.	<p>a. The connection cord of the base station is not plugged in.</p> <p>b. The adapter cord is not plugged in correctly in the base station.</p> <p>c. The line is busy, as another handset is used.</p> <p>d. Wrong connection cord.</p>	<p>a. Check the connections. Unplug and plug back in the mains. Check that the telephone line cord has been plugged into the base station and the phone socket.</p> <p>b. Check the base station plug and the AC plug (remove and plug-in).</p> <p>c. Wait until the line is unoccupied.</p> <p>d. Use the original connection cord.</p>
"SEARCHING" is displayed.	<p>a. Base station out of range.</p> <p>b. Base station is not connected to mains.</p>	<p>a. Reduce the range.</p> <p>b. Connect base station to mains.</p>
The call does not work.	Service not activated or wrong operator.	Check your Subscription with network.
No display.	Empty batteries.	Recharge batteries.

Technical Details

Field Range	Up to 300 meters*
Indoor Range	Up to 50 meters*
Handset Battery Autonomy (average values)	10 hours talk time** 100 hours standby**
Number of Handsets	Up to 4
Electrical Connection/Base Mains Adaptor/Charger	<p>Base and charger mains adaptor: </p> <p>Model No.: AT-536B-060045B or A318-060045W-UK1</p> <p>Input: 100-240 V/50-60 Hz/0.2 A</p> <p>Output: 6V DC/450 mA, 2.7W</p> <p>Only use the adaptors supplied with telephone.</p> <p>Single-phase AC, excluding IT install defined by the EN62368-1 standard.</p> <p>Caution: The network voltage is classified as hazard by the criteria of this standard.</p>
Telephone Connection	Appliance designed for connection to a TNV3 class (telecommunications network voltage) analogue telephone line as defined by the EN62368-1 standard.
Batteries per handset	2pcs of AAA NiMH batteries - 1.2 V - 300mAh Only use the batteries supplied with the telephone. Use any other type of battery presents a risk of explosion. Used batteries must be disposed of in compliance with current environmental protection regulations.
Operating Temperature	From 5°C to 40°C

* Values may vary according to environment.

** Depending on initial battery charge.

ATLINKS Europe
28 Boulevard Belle Rive
92500 RUEIL-MALMAISON - France
RCS Nanterre 508 823 747

ATLINKS UK Ltd
3rd Floor, Waverley House
7-12 Noel Street, London, W1F 8GQ - UK
Company registration: 13809295

www.alcatel-home.com
Alcatel is a trademark of Nokia, used under license by ATLINKS

F685 Voice UK
A/W no.: 10002251 Rev.1 (EN)
Made in PRC

Alcatel

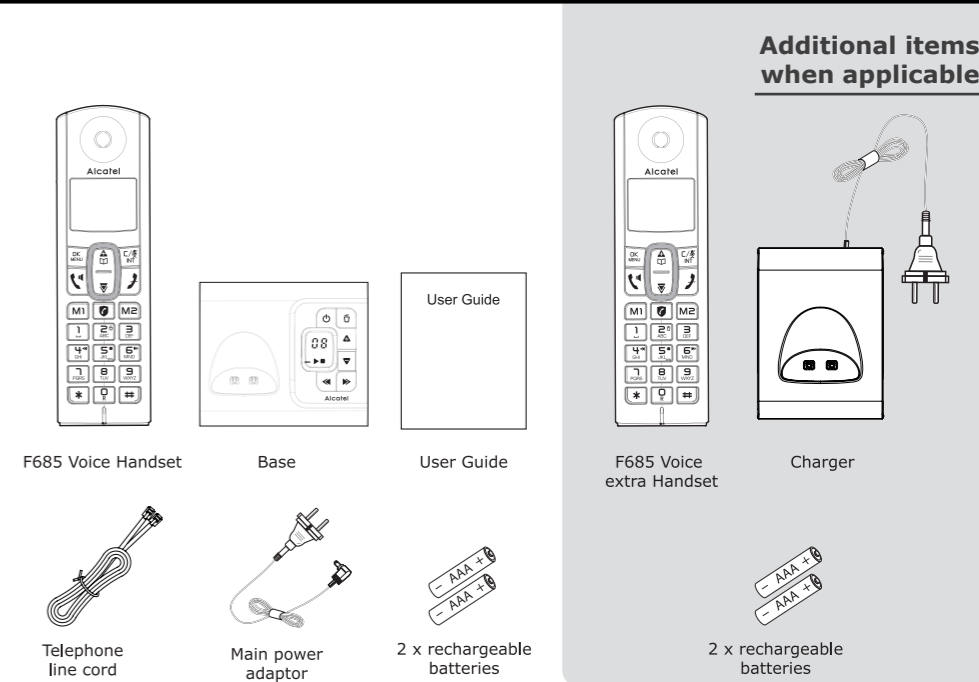
F685 VOICE F685 VOICE DUO F685 VOICE TRIO

User Guide

www.alcatel-home.com



Box Content



General Information

SAFETY

This telephone is not designed for Emergency calls when the mains power fails.
Do not use your telephone to notify a gas leak or other potential explosion hazard.
Do not open your device or its power supply to avoid risk of electrical shock.
Do not attempt to open the batteries, as they contain hazardous chemical substances.
Your telephone must be located in a dry place away from hot, humid and direct sunlight condition.
To avoid radio signal interference, place the phone at least 1 meter away from other electrical appliances or other phones.

ENVIRONMENT

This symbol means that your inoperative electronic appliance must be collected separately and not mixed with the household waste. The European Union has implemented a specific collection and recycling system for which producers are responsible.
Help us protect the environment in which we live!

CONFORMITY

Hereby, ATLINKS EUROPE declares that the radio equipment type DECT is in compliance with Legislation: Radio Equipment Regulations 2017 (SI 2017/1206). The full text of the EU declaration of conformity is available at the following internet address: www.alcatel-home.com



Hereby, ATLINKS EUROPE declares that the radio equipment type DECT is in compliance with Legislation: UK Radio Equipment Regulations (SI 2017/1206). The full text of the UKCA and EU declaration of conformity is available at the following internet address: www.alcatel-home.com



Average power per channel: 10mW
Maximum Output Power (NTP): 24dBm
Frequency Range: 1880-1900MHz

Making and receiving calls

Make and end a call

Press either before or after enter a phone number.

Press to end the call.

Answer a call

Press to answer a call. For handsfree conversation, press another time .

Incoming speech volume

Press or to increase or decrease the volume of your caller's voice.

View or dial a number in Calls list*

F860 can store up to 50 received call details.

To access this list, press and hold to open the calls list, press or to select an entry, press to dial the number.

Or press to access call details, store the number in phonebook or call block list, delete.

Phonebook

Store entry in phonebook (up to 50)

In idle mode, press , or to select **Phonebook**.

Press twice to select **ADD**, enter name of contact and press .

Enter number of contact and press , press again to save as VIP or to save as contact, select the melody and validate .

To register the direct memories in keys M1, M2, 1, 2 & 3

/ or select **HS Settings** / / or select **DIRECT MEM** / / or select **M1** or **M2**, or or / / edit or enter the number / .

Call from the phonebook

Press OR press and or to select **Phonebook** then to access phonebook.

Press / to select the desired entry.

Press to dial out the desired entry number.

Call direct memories

To dial out : Press **M1** or **M2**. / Press and hold , or .

Answering machine setting by handset

Set Answer Delay

/ or select **ANS. MACHINE** / / or select **TAM SETTINGS** / to select **ANSWER DELAY** / or to select **2-10 RINGS** / .

If you have subscribed to a voice mail service from your operator, make sure to set shorter delay on F685 Voice so that F685 Voice can answer and record the message.

Set the answer mode

/ or select **ANS. MACHINE** / / or select **TAM SETTINGS** / / to select **ANSWER MODE** / or select **ANSWER ONLY** or **ANS & REC** / .

Set the Out Going Message (OGM) voice language

/ or select **ANS. MACHINE** / / or select **TAM SETTINGS** / / or select **TAM LANGUAGE** / / or to select your preferred language / .

Record a personalised outgoing message

/ or select **ANS. MACHINE** / / or select **TAM SETTINGS** / / or select **OGM SETTINGS** / / or to select **ANSWER ONLY** or **ANS & REC** / / or select **RECORD MESS** / to start recording / to end recording.

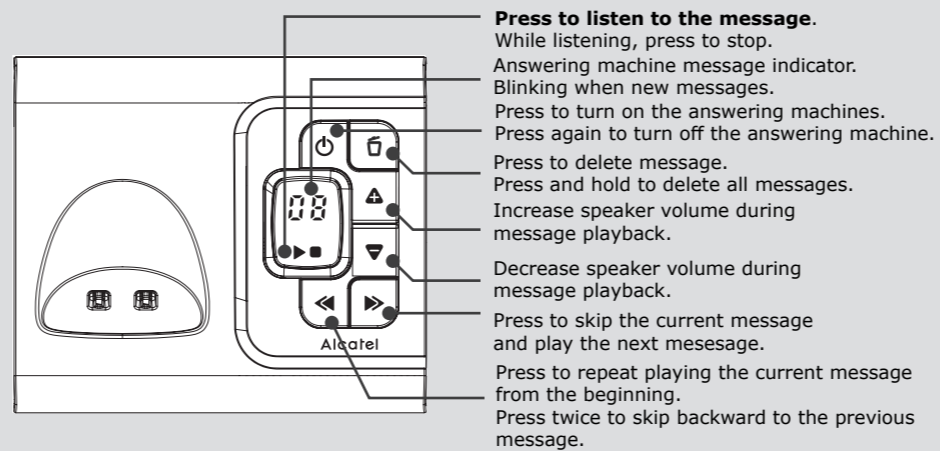
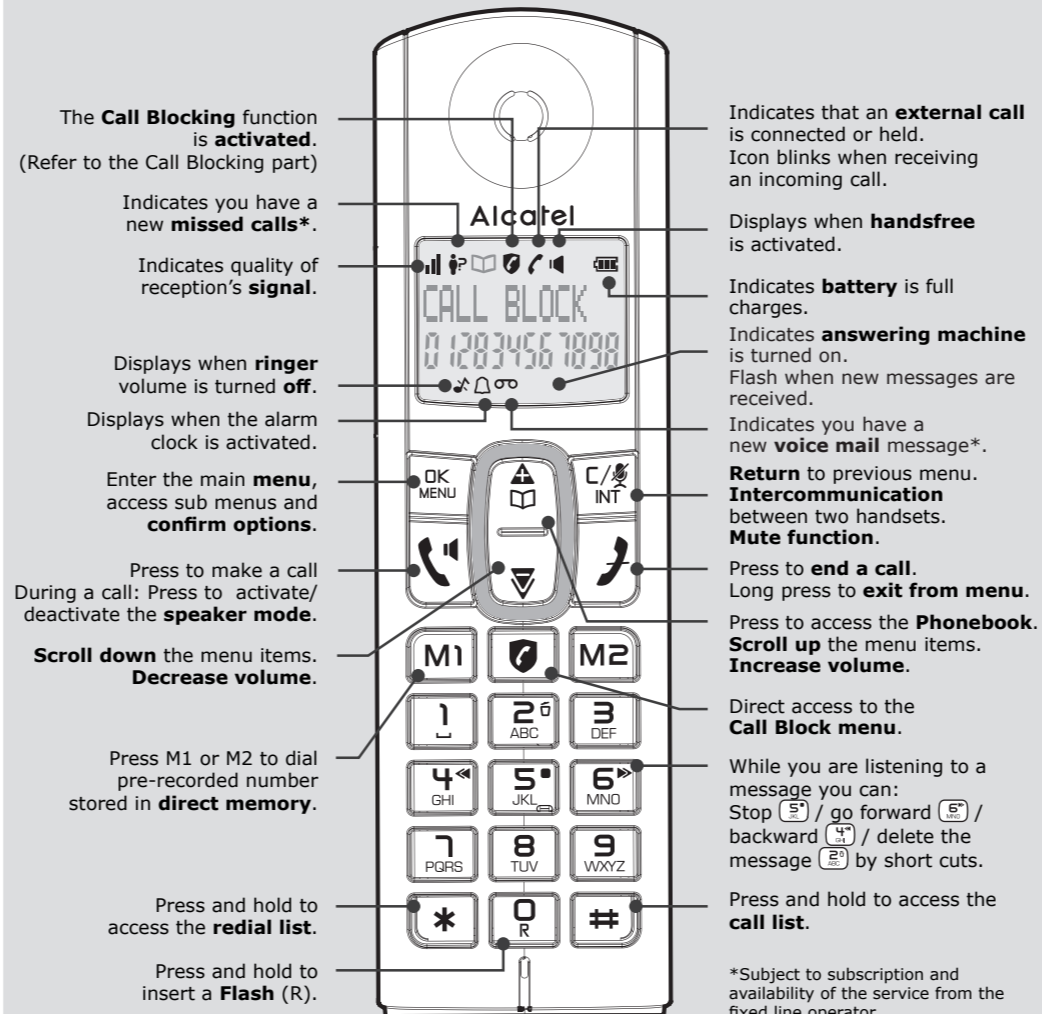
Call Block

This telephone is built-in with Smart Call Block feature*. This feature will help you avoid nuisance calls by only allowing some numbers to make your phone ring. Default setting Smart Call Block in this telephone is OFF but you can enable it via your phone settings

*This feature requires a subscription of Caller Line Identification service from your network service provider. Charges may apply.

Setting	Expectation
OFF	Call Block function (Block all call with numbers) is Disabled. This is the default mode.
ON	Call Block function is set to Manual. Numbers registered in the black list will not go through and the phone will ring silently. Numbers can be added to the list while the phone is ringing and / or after a call (to enable, see part 1).
CONTACTS	In this automatic mode, any number not registered to your phonebook will be automatically blocked and not cause your phone to ring. All calls from contacts registered to your phonebook will proceed normally. When this mode is chosen, Contacts OK is displayed on LCD in idle mode unless you have unread messages.
VIPS	In this second automatic mode, only calls from contacts registered as VIP in your phonebook will go through and cause your phone to ring. Any other number will not ring. When this mode is chosen, VIPS OK is displayed on the LCD in idle mode unless you have unread messages / missed calls (to enable, see part 2.2)

Handset, Display and Answering Machine description



1. Manual call block mode

Manual call block is the easiest option when starting out. When you chose ON in the call block settings, all calling numbers registered in your blacklist will be blocked. You can add/remove numbers from that list at any time.

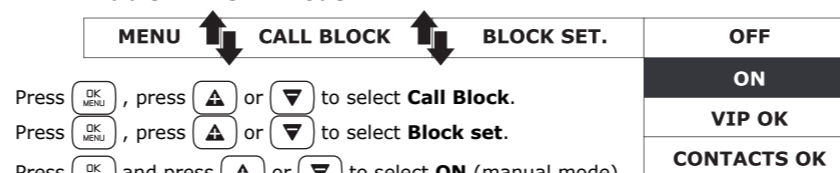
How to block an incoming call:

When the phone is ringing and before answering, press will terminate the call and offer you the option to register the number to the blacklist in one click.

Then to confirm the registration of this number in the blacklist, press .

IMPORTANT: if you don't confirm, the number will not be added to the blacklist and the next call will go through normally.

1.1. Enable MANUAL mode



OR

In idle mode, press to access **BLOCK SET.** directly.

After you enable this option, the call block icon will be displayed on the LCD.

1.2. Add numbers to Blacklist

In Idle mode,

Press key, **BLOCK SET.** is displayed, or Press to press or to select **CALL**

BLOCK, press to show **BLOCK SET**.

Press or to select **BLACKLIST**.

Press , press or to select **ADD**, enter number to be blocked, press to save.

NOTE: 2 more ways to add incoming and outgoing call numbers in Block list:

From incoming call numbers

Press , press or to select **CALL LIST** or press and hold .

Press , press or to select call list entry.

Press , press or to select to **ADD to BLIST**.

Press to show selected number, press to save to **Block list**.

From outgoing call numbers

Press and hold , press or to select redial list entry.

Press , press or to select to **ADD to BLIST**.

Press to show selected number, press to save to **Block list**.

1.3. Edit numbers in Blacklist

In idle mode,

1. Repeat step 1 and 2 in Section 1.2.

2. Press , press or to select **EDIT**, press or to select number to be edited, press to edit, and then press to save.

1.4. Delete numbers in Blacklist

1.4.1. Delete a number from blacklist

In idle mode,

1. Repeat step 1 and 2 in Section 1.2.

2. Press , press or to select **DELETE**, press or to select number to be deleted, press .

1.4.2. Delete all numbers from blacklist

In idle mode,

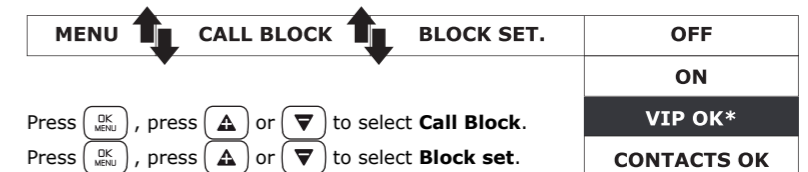
1. Repeat step 1 and 2 in Section 1.2.

2. Press , press or to select **DELETE ALL**, press , **CONFIRM?** is shown, and then press to confirm.

2. Automatic call block mode

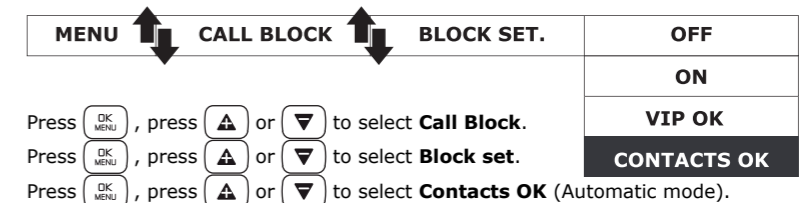
2.1. VIPS only

In this restrictive automatic mode, only calls from numbers registered as VIP in your phonebook will go through and make your phone ring.



2.2. Contacts only

In this broad automatic mode, only calls from contacts registered in your phonebook (normal and VIP) will go through and make your phone ring.



Handset paging / Registration

Paging (Handset search)

Short press on (Fig.D) located under the base.

The handset will ring for 60 seconds. Press any keypad key on handset to stop ringing.

Handset registration

For multi-handset models, all handsets supplied are already associated with the base station.

Pairing is only necessary if you purchase an Alcatel F860 Extra Handset (4 handsets max. per base) or when replacing a defective handset.

Press and hold for about 8 seconds.

On F860 extra handset, Press .

PIN? will display (if not, select **REGISTRATION** with or)

Enter the default PIN: 0000 (can be modified in BS settings menu)

Press .

